



(SAS) GANGWAYS SELF-ADJUSTING STAIRS



**EXTRA
STRONG
DESIGN**

**AVAILABLE:
24" 36" 48"
60" AND 72"**

**WIDE
WORKING
RANGE**



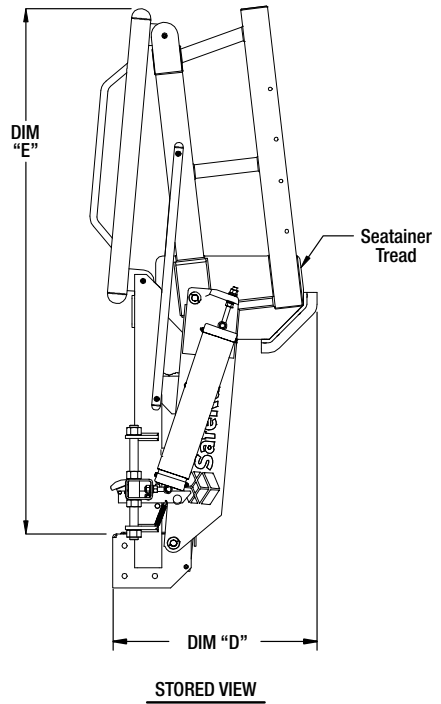
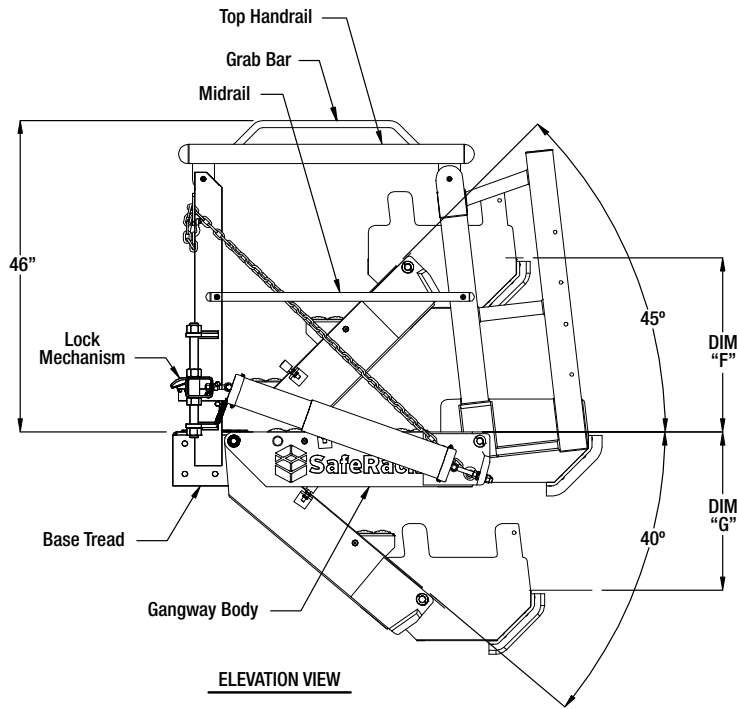
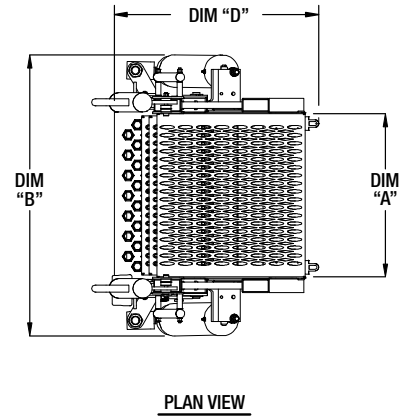
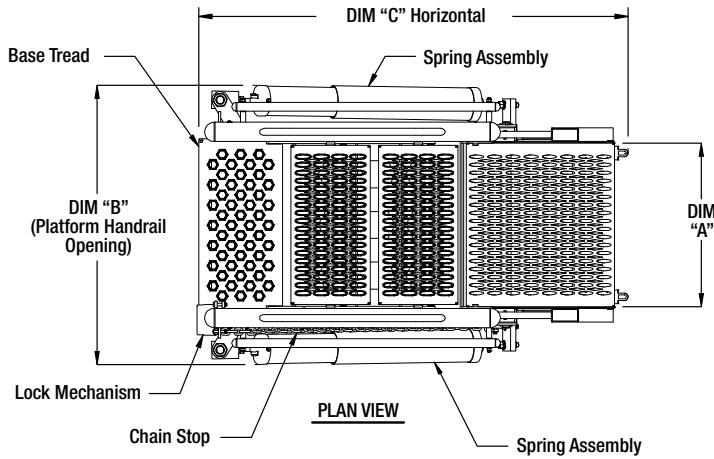
Our Self-Adjusting Stair (SAS) Gangways are constructed with an extra-strong tube design for safety cage mounting. Available in 24", 36", 48", 60" and 72" widths and numerous lengths to fit your application needs. Working range of 40-degrees below and 45-degrees above horizontal.

Safe, Rugged and Easy to Use. Built to articulate and self-level, SafeRack's SAS gangways are designed to accommodate varying heights of vehicles. And they're designed to last, too. With a one-piece stair design, welds are reduced and failures are virtually eliminated. Still, despite being extremely rugged, our SAS gangways are easy to use, as the spring counterbalance requires minimal effort, requiring less than 35 pounds of pressure to raise or lower. Less chance for muscle strain or operator injury. On top of that, the self-adjusting stair gangways can easily be retrofitted to replace your old, unsafe gangways.

SafeRack's SAS gangway designs are more ergonomic and longer lasting. Tested in the most critical applications, these gangways outperform all others. Adding fall protection cages is easy, and customized designs are available to meet difficult applications.

Features

- Heavy-duty base tread upright
- One-piece stair design reduces welds & failure/repair costs
- Optional SafeLok system locks gangway into position (does not rest on the vehicle)
- Rubber bumpers for vehicle protection
- Elongated last tread for an increased working area at the end of gangway
- Extra-strong tube design for safety cage mounting
- Construction material choices are – aluminum, galvanized or stainless steel
- Made with all computer control processing machinery with 0.004" tolerances at the pivots points
- Shipped fully assembled – just bolt on the safety cage if included
- OSHA compliant
- Fast deliveries available



DIMENSIONS: (shown in inches)

Walk surface widths (DIM A)	24"	36"	48"	60"	72"
Corresponding Overall Widths (DIM B)	42"	54"	66"	78"	90"

MODEL #	DIM C	DIM D	DIM E	DIM F	DIM G
3 STEP	50"	30"	65"	17"	15"
4 STEP	63"	31"	78"	26"	24"
5 STEP	76"	32"	91"	35"	32"
6 STEP	89"	33"	104"	44"	40"
7 STEP	102"	34"	117"	53"	49"

SPECIFICATIONS

- Total load capacity - 500lbs, Handrail - 200lbs, Mid-rail - 100lbs
- Available working range - 45° above to 40° below horizontal
- 2.9" ø handrail with 1" ø grab bar
- Base tread hot dipped galvanized per astm a 123. gangway body constructed of aluminum (stainless steel-optional)
- Self supporting by use of adjustable chain stops
- Spring counterbalanced for ease of operation
- Load bearing pivot points contain oil impregnated bronze bearings
- AWS welding spec. d 1.1-d 1.2
- All critical hardware is stainless steel