



PLATFORM INSPECTION LIGHTS AND LIGHTING



180°
RANGE OF
MOTION

LIGHTING
FOR ANY
LOCATION

MULTIPLE
LIGHTING
SOLUTIONS



Complete Platform Lighting Solutions

The days of hiring separate architects, contractors, and electricians are over. SafeRack can spec and install all of the electrical wiring and lighting for your canopy or loading shed. Our professionals will work to get your project designed, erected and lit as fast as possible. With over 400 years of collective experience, SafeRack knows exactly which lighting solutions work (and last).

With rugged options designed to withstand harsh conditions, including explosive gases, fibers and dust particulates. Our solutions will work for any in-the-field application or condition.

Energy-efficient and easy to maintain lighting, well suited to meet the most demanding requirements.

Features

- High-performance precision optics system
- Driver-access plate with stainless steel safety retention chain and captive hardware
- Field-replaceable LED circuit boards and drivers with quick disconnects
- Approved for high-ambient applications, up to 149°F (65°C)
- Two permanent safety cable retention points

LED FLOOD LIGHTING FOR HARSH ENVIRONMENTS

LFL FLOOD LIGHTS

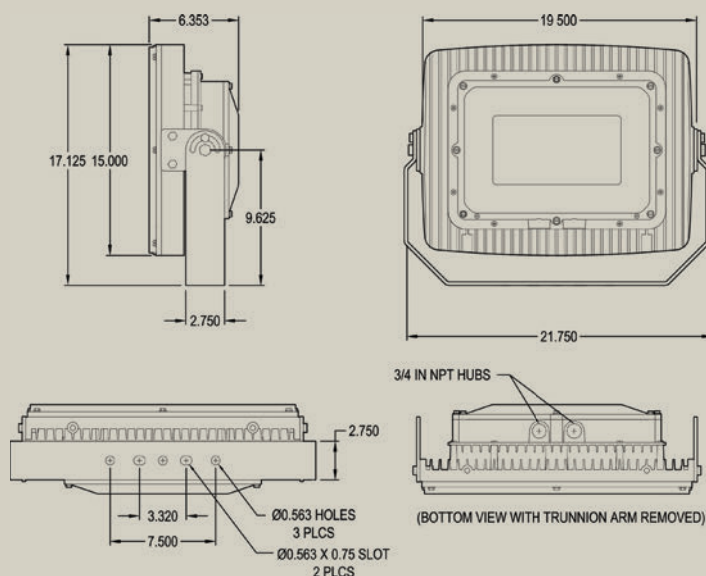


Built to last in any environment.

The LHFL Flood light has a range of features that make it the ultimate solution for your platform location. Whether you need lighting for an existing platform or you need a turn key solution, SafeRack can supply the correct lighting for your project.

Features

- Versatile trunnion mount, with 180° range of motion
- Dual hub entries, feed-through capable
- Terminal block
- Optional polycarbonate impact-resistant clear or diffused lens
- 10 kV standard surge protection



MHL FLOOD LIGHTS



Features

- Low-profile, lightweight design
- Heavy-duty, 3/8" -thick die-cast safety cable attachment points
- Field-replaceable LED circuit boards and drivers with quick disconnects
- Adjustable mounting bracket with 60° range of motion and nine locking positions
- Impact-resistant clear or diffused lens
- Class 1, Div 2, Groups A,B,C and D
- Class 2, Div 2, Groups F and G
- UL, CSA, NEMA 4X, ETL listed